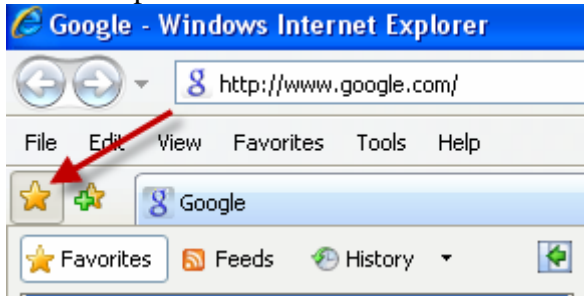


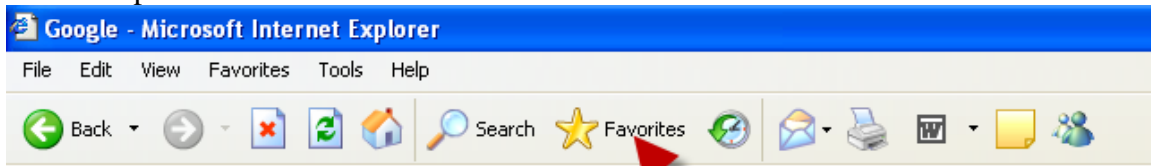
Teacher Access Center Logging In

To log in to Teacher Access Center, open Internet Explorer.

Internet Explorer 7 - click on the yellow star at the top left of the screen, and open the Favorites panel.

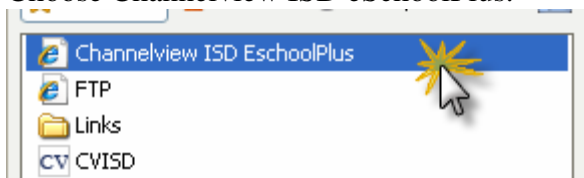


Internet Explorer 6 - click on the yellow star at the top of the screen, and open the Favorites panel.



Click to open Favorites

Choose Channelview ISD eSchoolPlus.



NOTE: If you do not have it in Favorites, visit the CISD webpage, and click on Employee.



- eSchool Plus - **internal login** || **external login**

on campus

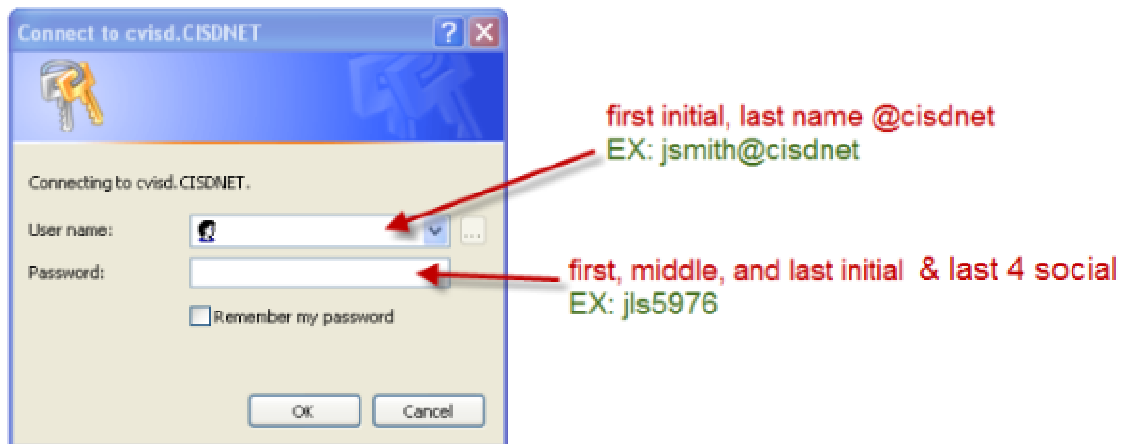
at home

Choose the appropriate link, depending on your location.

You will enter the username and password similar to those that you use when you log in to your computer. This is not the same as your FirstClass username and password.

Your Teacher Access Center username is your first initial and last name – no spaces – followed by **@cisdnnet**

Your Teacher Access Center password is your first, middle, and last initial, and your last 4 social security digits – no spaces.



Exception: #1: There are some individuals whose usernames differ from this pattern. If your first initial and last name is the same as another employee's who was hired before you were hired, your username will be the **first 2 letters** of your first name, followed by your full last name.

Exception #2: If you have no middle name, your password will be your first initial of your first name, first initial of your last name, and your last 4 social security digits – no spaces.

If you see this screen, choose **CISD_Live** and click **OK**.

Teacher Access Center

Select Database

Please select a database:

 Summer School

Upon successful login, you will see your Teacher Access Center home screen.

eSchoolPlus+
Teacher Access Center

My Home

<< Max

- View Student List
- Take Attendance
- Morning Bulletin
- Define Assessments
- Score Assessments
- Enter Interim Progress
- Enter Report Cards
- Enter Competencies
- Email Students/Guardians
- Teacher Preferences
- Select Theme
- Set Environment

My Classes

Courses: Current MP Courses |
 Attendance Date: 7/29/2008 |
 RC Run: 4 |
 IPR Date: 12/15/2006

Period	Course	Description	Room	Cycles	Marking Periods	Actions								
Building: 2 - Building 2		Staff: Mrs. Kombe												
	N/A	Eligibility									IPR	✓		
1	409 - 1	Algebra 1	119	M, T, W, R, F	M1, M2, M3, M4	List	-	-	Def	Score	IPR	✓	RC	Comp
2	409 - 2	Algebra 1	204	M, T, W, R, F	M1, M2, M3, M4	List	-	-	Def	Score	IPR		RC	Comp
2	409 - 3	Algebra 1	107	M, T, W, R, F	M1, M2, M3, M4	List	-	-	Def	Score	IPR		RC	Comp
4	411 - 3	Algebra 2	107	M, T, W, R, F	M1, M2, M3, M4	List	-	-	Def	Score	IPR		RC	Comp
6	420 - 1	AP Calculus	106	M, T, W, R, F	M1, M2, M3, M4	List	-	-	Def	Score	IPR		RC	Comp
7	412 - 3	Calculus	119	M, T, W, R, F	M1, M2, M3, M4	List	-	-	Def	Score	IPR		RC	Comp
	CHRS	Mixed Chorus				List	-	-						

My Lunch Counts

Lunch Type	Count
Building: 2 - Building 2	
Hot Lunch	0
Milk Only	0

News

7/10/2008 - Training
You are working in the training database.

My Reports

File Name	Last Modified	Delete
You do not have any reports.		